

公司名称	深圳市千岸科技有限公司
产品名称	TS-BTS20 蓝牙音箱
确认/打样时间	2020-05-29

<p>Find more about Declaration of Conformity, please click the below link to download: Http://files.tribit.com/BTS20-DOC-EN.pdf Um mehr über die Konformitätserklärung zu erfahren, klicken Sie bitte auf den folgenden Link: Http://files.tribit.com/BTS20-DOC-DE.pdf</p>	<p>Tribit</p> <p>Portable Wireless Speaker XSound Go</p> <p>USER MANUAL TS-BTS20</p>
--	---

说明书尺寸: 60*80mm (单页尺寸)

说明书材质: 封面95g铜版纸 内页80g书纸

说明书工艺: 册子

打样信息备注: 无问题/XXX

Contents:

English User Manual	1
取扱説明書	13
Benutzerhandbuch	21
Manuale Utente	30
Guide Utilisateur	39
Manual de Usuario	48

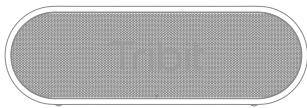
Safety instructions

- Avoid dropping.
- Do not disassemble.
- Avoid extreme temperatures.
- Do not use the device outdoors during thunderstorms.
- Do not use any corrosive cleaner/oil to clean.

Specification

Bluetooth version: V5.0
Support: A2DP, AVRCP, HFP, HSP
Output power: 2 x 8W
Battery: 3.7V, 4400mAh
Battery charge time: 5 hour
Input: DC5V/1A
Dimension: 175 x 59 x 56 (mm)
Weight: 380g

What's in the box



XSound Go



USB-C Cable

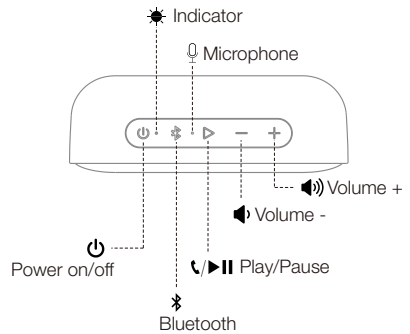


Lanyard

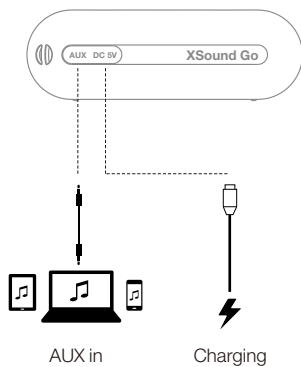


User Manual

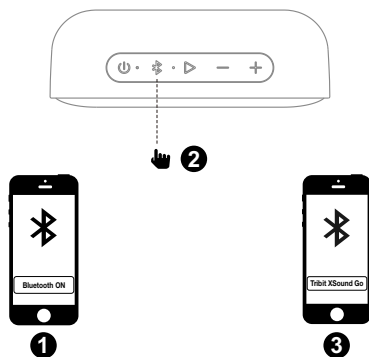
Overview buttons & Indicators



Connections

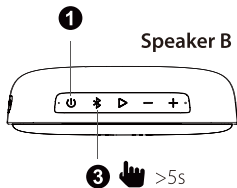
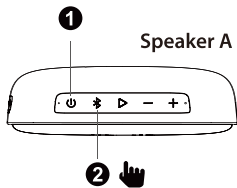



Bluetooth connection




Stereo Mode

1. Make sure both speakers are on.



2. Press  on one of the speakers to enter pairing state.

3. Press  on the other speaker for 5s, then release the button to enter Stereo pairing when you hear the "Stereo mode". When you hear "Left channel" on the left speaker and "Right channel" on the right speaker, the "Stereo mode" is on.

Buttons

Button	Operation & Function
Power on/off	Press to turn on/off
Bluetooth	Press to enter pairing mode
Volume +	Press to increase the volume level
Volume -	Press to decrease the volume level
Play/Pause	<ul style="list-style-type: none"> • Press to play/pause Music and answer/end call • Long press to reject a call • Press twice to skip to next track • Press triple to skip to Previous track

Indicator

Indicator	Status
Blue indicator flashes slowly	Reconnection mode
Blue indicator flashes quickly	Bluetooth pairing mode
Blue indicator keeps on	Pairing has been successful
Red indicator flashes slowly	Low battery power (<15%), charge the speaker as required

Red indicator flashes quickly	Low battery power (<2%) and will automatically power off after 5s charge the speaker immediately
-------------------------------	--

Reset

If this speaker has some problem, you can try to press and hold “Volume +” and “Volume -” button simultaneously for 5 seconds to reset, and then pairing again (delete the old pairing in your device).

FCC Statement

Changes or modifications not expressly approved by the party responsible for compliance could void the user's authority to operate the equipment. This equipment has been tested and found to comply with the limits for a Class B digital device, pursuant to Part 15 of the FCC Rules. These limits are designed to provide reasonable protection against harmful interference in a residential installation.

This equipment generates uses and can radiate radio frequency energy and, if not installed and used in accordance with the instructions, may cause harmful interference to radio communications. However, there is no guarantee that interference will not occur in a particular installation. If this equipment does cause harmful interference to radio or television reception, which can be determined by turning the equipment off and on, the user is encouraged to try to correct the interference by one or more of the following measures:

- Reorient or relocate the receiving antenna.
- Increase the separation between the equipment and receiver.
- Connect the equipment into an outlet on a circuit different from that to which the receiver is connected.
- Consult the dealer or an experienced radio/TV technician for help

-10-

This device complies with part 15 of the FCC rules. Operation is subject to the following two conditions (1) this device may not cause harmful interference, and (2) this device must accept any interference received, including interference that may cause undesired operation.

* RF warning for Mobile device:

This equipment complies with FCC radiation exposure limits set forth for an uncontrolled environment. This equipment should be installed and operated with minimum distance 20cm between the radiator & your body.

Customer service

18-month limited warranty

- **For FAQs and more information, please**
- **Email to:**
support@tribitaudio.com

-11-